



3.2V 340Ah Lithium Iron Phosphate Batteries Battery Cell

Our Product Introduction

Basic Information

- Place of Origin: China
- Brand Name: Pinsheng energy
- Certification: CE , MSDS , UN38.8 , ISO9001
- Model Number: 3.2V,340AH
- Minimum Order Quantity: 1PCS
- Price: USD39/PC
- Packaging Details: pallet or wooden case
- Supply Ability: 10000 sets per month

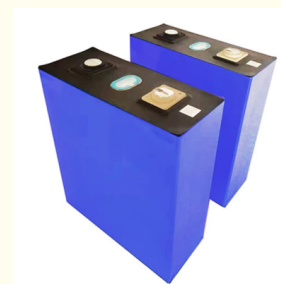
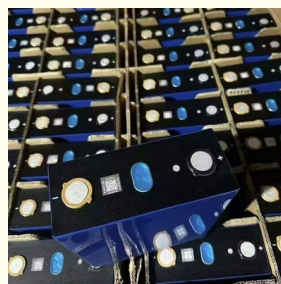
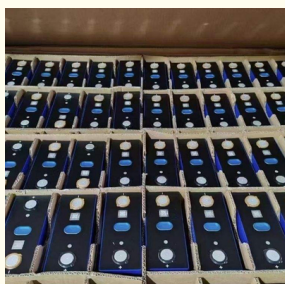


Product Specification

- Recharge Cycles: 4000 Cycles
- Voltage: 3.2V
- Applications: Consumer Electronics, Power Tools, BOATS, Toys
- Capacity: 340AH
- Battery Dimensions: 202X 175.4 X 81.2(MM)
- Chemistry: LiFePO4
- Warranty: 1 Year
- Operating Temperature: -20 To 60
- Highlight: 3.2V 340Ah LiFePO4 battery cell, rechargeable lithium iron phosphate battery, 340Ah Li Ion battery cell



More Images



for more products please visit us on rechargeable-liionbattery.com

Product Description

3.2V 340Ah Lithium Iron Phosphate Batteries Battery Cell

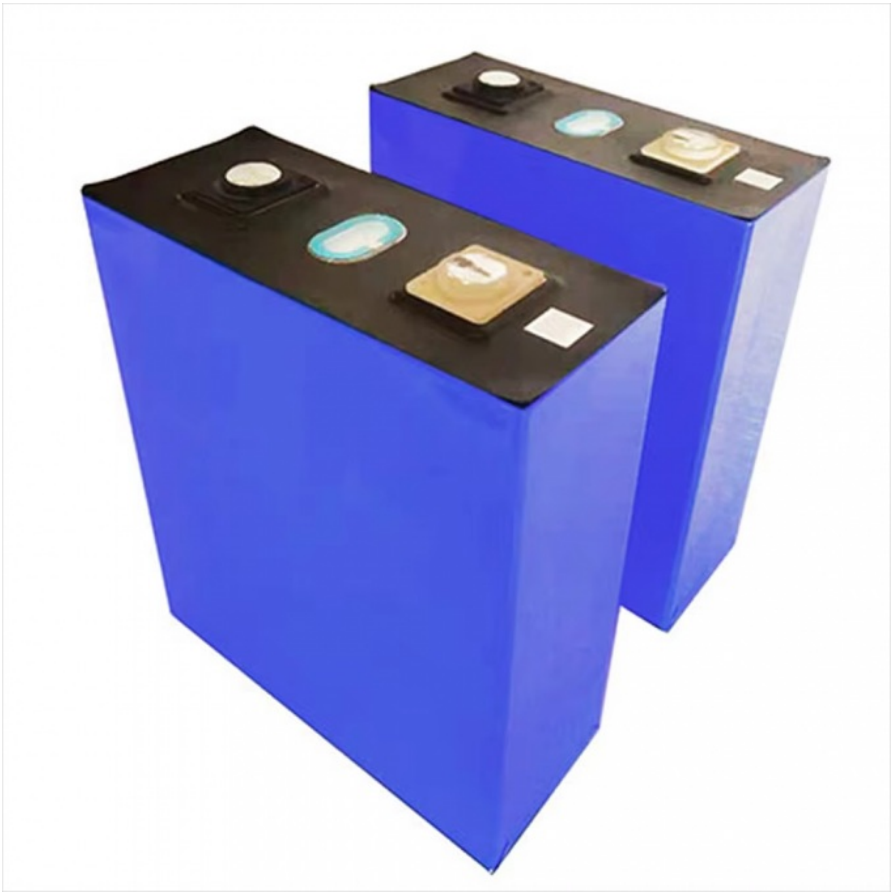
Product Specifications

Attribute	Value
Recharge Cycles	4000 cycles
Voltage	3.2V
Applications	Consumer Electronics, Power Tools, BOATS, Toys
Capacity	340AH
Chemistry	LiFePO4
Battery Dimensions	202X 175.4 X 81.2(mm)
Net Weight	6 kg
Maximum Charge Current at Room Temperature	1 C (Continuous)
Charging Voltage	3.65V
Maximum Discharge Current at Room Temperature	1 C (Continuous) 3 C (60s)
Discharge End Voltage	2.5V(>0),2.0V(≤0)
Max Operating Temperature Range	
Charge	0 ~ 65
Discharge	-35 ~ 65
Optimal Operating Temperature Range	
Charge	15 ~ 35
Discharge	15 ~ 35
Storage Temperature	
1 month	-30 ~ 45
6 months	-20 ~ 35°C

Product Overview

3.2V 340Ah Lithium Iron Phosphate Batteries Battery Cell





Key Features

Product Name: Lithium Iron Phosphate Batteries Battery Cell
Operating Temperature: -20 To 60
Applications: Consumer Electronics, Power Tools, BOATS, Toys..
Voltage: 3.2V
Material: LiFePo4
Capacity: 340AH
Lithium Battery Cell

Technical Parameters

Type	Rechargeable Li-Ion Battery
Material	LiFePo4
Weight	6kg
Capacity	340Ah
Operating Temperature()	-20~60
Recharge Cycles	4000
Safety Certification	CE/RoHS/UN38.3
Rechargeable	Yes

Customization Options

Brand Name: Pinsheng energy
Place of Origin: China
Voltage: 3.2V

Material: LiFePo4

Capacity: 340ah

Protection: Overcharge/Over Discharge/Over Current/Short Circuit

Packaging & Shipping

The Rechargeable Li Ion Battery should be packaged in a sturdy box or container with the appropriate cushioning material to prevent shifting and ensure safe delivery. The package should be sealed with waterproof tape.

Shipping is done using reliable carriers like FedEx, UPS, or DHL. The package is clearly labeled with the recipient's address and contact information.

FAQ

Q1 Q:Why choose Pinsheng energy ?

A: Pinsheng Energy have focused on this area over 12 years , it's a manufacturer with strong R&D team ; Professional sales and technical team ; Strict Production process & QC process ; Good after-sales service system etc .

Q2 Q: Can I have a sample order?

A: Yes, we welcome sample order to test and check quality. Customized is available.

Q3 Q: How to proceed an order?

A: Firstly let us know your requirements or application. Secondly we quote according to your requirements or our suggestions.
Thirdly customer confirms the samples and places deposit for formal order.
Fourthly we arrange the production.

Q4 Q: What about the lead time?

A: Sample needs approx 15-25 days, mass production time needs negotiation.



PINSHENG
ENERGY

ONLINE SERVICE

Any requirements please feel free to contactus.We will do our best to help you in any time

 +86 13307465388
(Mobile/Whatsapp/Wechat)

 info@pinshengenergy.com
sofia@pinshengenergy.com

 <https://pinshengenergy.en.alibaba.com/>

PINSHENG



Hunan Pinsheng Energy Technology Co., LTD.



15616151876



info@pinshengenergy.com



rechargeable-liionbattery.com

NO. 259, Lixiang East Road, Xiangfeng Technology Industry Park, Changsha City, Hunan, China.