



Pinsheng Energy LiFePO4 Battery 48V 10Ah Ebike Battery

Our Product Introduction

for more products please visit us on rechargeable-liionbattery.com

Basic Information

- Place of Origin: HUNAN,CHINA
- Brand Name: pinsheng
- Certification: CE
- Model Number: PE3610
- Minimum Order Quantity: 1 Set
- Delivery Time: 25
- Payment Terms: T/T
- Supply Ability: 30000+set+per month



Product Specification

- Anode Material: NCM
- Chargeable: Yes
- Application: Home Appliances, Consumer Electronics, BOATS, Golf Carts, SUBMARINES, Ele
- Battery Size: 36v 10ah
- The Charging Ratio: 0.5C
- The Discharge Rate: 1C
- Certificate: CE/MSDS/UN38.3
- Capacity: 10ah-100ah
- Highlight: Energy LiFePO4 Battery 48V 10Ah, 48V 10Ah Ebike Battery



Company Display



PINSHENG
ENERGY

Hunan Pinsheng Energy Technology Co.,LTD



CERTIFICATE



LITHIUM BATTERY SUPER HIGH QUALITY AND RELIABLE



CUSTOMIZE
LOGO,CAPACITY,VOLTAGE&SIZE



PINSHENG
ENERGY

PROFESSIONAL OEM/ODM MANUFACTURER

Key Features of Pinsheng Energy Battery :

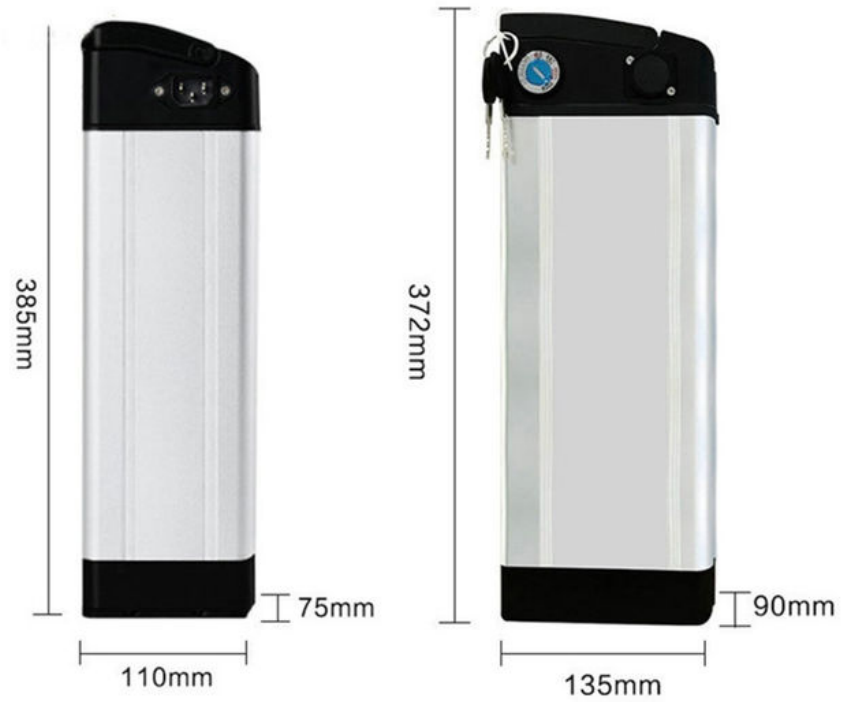
- 1.Factory Price
2. After sales and quality assurance
3. Most safe LFP battery technology, no cobalt .
4. Long lifetimes ->5000 cycles
5. Easily expandable
6. Easily replacement the original lead acid battery .
7. Self-engineered BMS
8. Short circuit/ Over current/ Over voltage/ Over temperature protection .
9. Bluetooth APP available on request to see the status of the battery .
10. IP65 waterproof .
11. OEM logo available

Specifications :

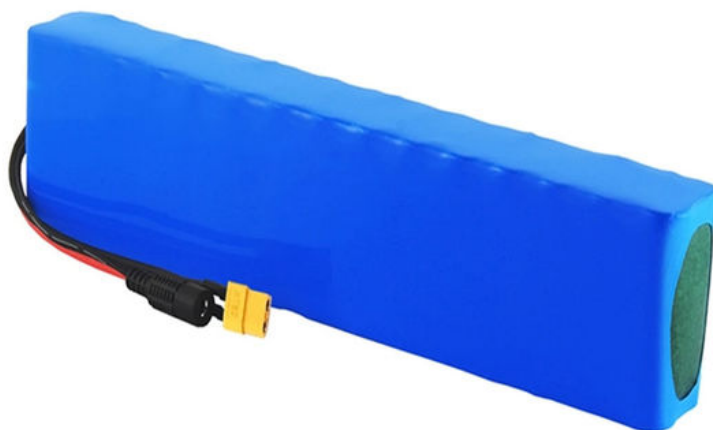
48v 10Ah battery parameters

| | | |
|------------------|---------------|-------------------------------|
| Battery Type | lifepo4 cell | Note |
| Nominal Capacity | 10Ah at 23±2 | Standard charge and discharge |
| Nominal Voltage | 36V | |
| 288Energy | 480Wh at 23±2 | |
| Weight | 6KG | |
| Size | 76*110*385mm | it can adjustable |
| Nominal Capacity | 10Ah | |
| Charging Voltage | 54.75±0.15V | |
| | | |

| | | |
|-----------------------------|------------------|--|
| Discharge End Voltage | 37.5±0.3V | |
| Standard Charging Method | CC and CCV is 5A | Temperature 23±2 ,charge end with 2.5h or current drops to 0.02C |
| Max.Charge Current | 10A | Temperature 23±2 |
| Standard Discharging Method | 10A | Constant Current Discharge with 1C |
| Max.Discharge Current | 20A | Discharge Time: Less than 60 s(at 23±2) |
| Cycle life | ~1000cycles | 1C/1C, Retention ≥70% of initial capacity |
| Operating Temperature | 0 ~45 | Charging Operating |
| | -20 ~45 | Discharging Operating |
| | | |









WE CAN DO IT



Our advantage :

- ✓ high efficiency development based on our strong team
- ✓ supply goods with lowest price
- ✓ high quality service



Our promise :

- ✓ professional service for customer , provide correct sample quickly
- ✓ supply high quality standard
- ✓ delivery goods on time

PAYMENT&LOGISTICS

LOGISTICS

BY AIR / BY SEA / EXPRESS / UPS / FEDEX / DHL



Trade Assurance

T/T



L/C

PayPal



VISA

FAQ

Q1 Can you give me a discount ?

A: We are manufactory , our policy is that bigger quantity , cheaper price , so we will give you discount according to your order quantity

Q2 The shipping cost is too high , can you give me more cheaper ?

A: When we calculate the shipping cost for you . we will use the cheapest and safest courier .and it is shipping company who ask us to pay , we cant gie you cheaper , pls kindly understand But we can promise that we will not ask you to pay more shipping cost , if u think it is too expensive , you can use your own shipping company . it is ok for us .

Q3 Can you offer free shipping ?

A: For we are manufacturer, we have given the cheapest price as we can,and we did not add shipping cost into the products cost , so we cant offer free shipping , pls kindly understand , tks .

Contact Us



PINSHENG
ENERGY



Sofia Tse

Sales Manager

**Hunan Pinsheng Energy
Technology Co.,LTD**

2/F,Building 4,Xiangfeng High-Tech Industrial Park,Changsha
County, Changsha City, Hunan Province
M.P.:+86-15675831763/13307465388
P.C: 410100
E-Mail: sofia@pinshengenergy.com



PINSHENG
ENERGY

Hunan Pinsheng Energy Technology Co.,LTD



Hunan Pinsheng Energy Technology Co., LTD.



15616151876



info@pinshengenergy.com



rechargeable-liionbattery.com

NO. 259, Lixiang East Road, Xiangfeng Technology Industry Park, Changsha City, Hunan, China.

