



Pinsheng iron phosphate battery 10kwh wall mounted batteries lifepo4 48V 51.2V lithium ion solar battery 200ah

Our Product Introduction

for more products please visit us on rechargeable-liionbattery.com

Basic Information

- Place of Origin: Hunan, China
- Brand Name: Pinsheng
- Certification: CE/RoHS/UN38.3/MSDS
- Model Number: PE48200
- Minimum Order Quantity: 2 pieces
- Price: \$1,956.00/pieces 2-9 pieces
- Packaging Details: wooden box un38.3
- Supply Ability: 5000 Unit/Units per Month



Product Specification

- Battery Type: Lithium Ion, LiFePO4, Other
- Product Name: 10KWH WALL MOUNTED SOLAR BATTERY
- Capacity: 50Ah 100Ah 150Ah 200Ah
- Voltage: 48V/51.2V Optional
- Battery Size: Customized
- Protection: Built-in BMS
- Application: Solar Power Energy Storage
- Key Feature 1: Deep Cycle
- Key Feature 2: Wall Mounted
- Key Feature 3: Long Lifespan
- Port: Shenzhen
- Highlight: **lifepo4 lithium ion solar battery, 10kwh lithium ion solar battery, 48V lithium ion solar battery**



More Images



Detail display



Product Parameter



Product Features

More Cycle Life

With around 3000 times On 80%.DOD

With Smart BMS and Super Safety Design

With over charge protection, over current protection, over discharge protection, short circuit protection, high and low temperature protection

Wide range of temperature

Reliable performance in wide rangeservice temperature from -20°C to 60°C

Support Customization

Support OEM&ODM and customize voltage and capacity

Excellent Electrical Performance

Low internal resistance,good charging/discharging

Good use

Wall mounted ,small dimension and appearance is beautiful.

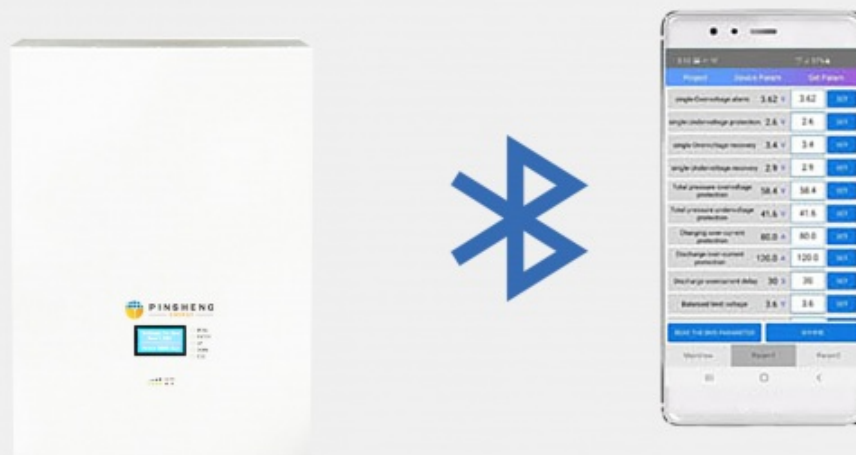


Product Advantage

The computer obtains the internal information of the battery pack through RS485,RS232,CAN.



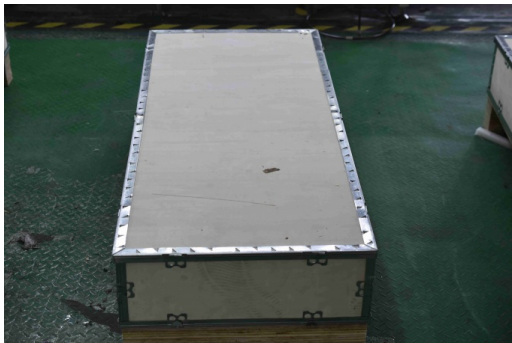
The computer obtains the internal information of the battery pack via Bluetooth.





Specification

	Performance	
Nominal Voltage	51.2V	51.2V
Nominal Capacity	100AH	200AH
Battery Energy	5120Wh	10240Wh
Charge Voltage	55.68~56.16Vdc	
Discharge Voltage	45.6-56.16 Vdc	
Communication		
Display	SOC status indicator, LED indicator	
Communication	RS232, RS485, CAN	
General Specification		
Dimension	550*430*165MM	850*500*165MM
Weight	48KG	95KG
Installation	Wall mounted	
Working Temperature	-20 ~ 60	
Storage Temperature	≤25 ,12 months; ≤35 ,6 months; ≤45 ,3 months	
IP Rating	IP20	
Scalabilit	Max 15 batteries in parallel	
Standard Compliance		
Certification	UN38.3, IEC 62619, IEC61000, UL 1642(cell) (more available upon request)	
Ordering and Deliverable Part		
Product ordering part	Battery pack,Parallel cable, communication cable	



One Battery One Wooden Case

Company Profile



Pinsheng Energy with R&D located in Changsha City, Hunan Province, near to Guangzhou. It is a High-Tech Enterprise with 4,000 square meters workshop and 121 staffs. Pinsheng Energyh focus on developing and producing Lithium battery and battery system integration, after many years development and research, we have formed a complete industry chain from research, production to sales. Our lithium battery has the characteristics of longer cycle life, more higher security and more reliability, higher energy density and other superior performance. Our products are widely used in energy storage system such as off grid wind & solar energy storage, telecommunication system, UPS and etc and power system such as electric motorcycles, electric bikes, E- scooter, electric tricycles, golf cart, fork lift,electric vehiclesetc. Pinsheng Energy Battery products has a good reputation in China and abroad, it has strict quality guarantee system to ensure high-quality products. Pinsheng Energy put customers' needs at the first and listen to their suggestions. We will continuously improve our product quality and services. Pinsheng Energy is edicated to be a top OEM &ODM lithium battery manufacturer in the world.

FAQ

1. who are we?

We are based in Hunan, China, start from 2011, sell to Western Europe(28.00%), North America(27.00%), Southeast Asia(18.60%), South America(5.00%), Eastern Asia(5.00%), South Asia(5.00%), Eastern Europe(3.00%), Africa(3.00%), Mid East(2.00%), Oceania(1.50%), Central America(1.00%), Northern Europe(0.50%), Southern Europe(0.30%), Domestic Market(0.10%). There are total about 101-200 people in our office.

2. how can we guarantee quality?

Always a pre-production sample before mass production;
Always final Inspection before shipment;

3. what can you buy from us?

battery, lithium battery, solar energy system, lithium power battery, lithium battery pack

4. why should you buy from us not from other suppliers?

more than 4,500 square meters workshop and 150 staffs. more than 11 years OEM & ODM experiences and be a strong supplier of many well-known customers. Manufacturer competitive price Good after-sales service Integrity management On-time delivery

5. what services can we provide?

Accepted Delivery Terms: FOB, CFR, CIF, EXW, CIP, FCA, CPT, DEQ, DDP, DDU, Express Delivery, DAF, DES

Accepted Payment Currency: USD, EUR, JPY, CAD, AUD, HKD, GBP, CNY, CHF;

Accepted Payment Type: T/T, L/C, D/P D/A, MoneyGram, Credit Card, PayPal, Western Union, Cash, Escrow;

Language Spoken: English, Chinese, Spanish, Japanese, Portuguese, German, Arabic, French, Russian, Korean, Hindi, Italian



Hunan Pinsheng Energy Technology Co., LTD.



15616151876



info@pinshengenergy.com



rechargeable-liionbattery.com

NO. 259, Lixiang East Road, Xiangfeng Technology Industry Park, Changsha City, Hunan, China.