



10kw 20kwh 25kwh 30kw Solar Energy Storage System All In One Cabinet LiFePO4 For Home

Our Product Introduction

for more products please visit us on rechargeable-liionbattery.com

Basic Information

- Place of Origin: Hunan, China
- Brand Name: Pinsheng
- Certification: CE/RoHS/UN38.3/MSDS
- Model Number: PE-AIO-ESS series
- Minimum Order Quantity: 2 units
- Price: \$3,300.00/units 2-9 units
- Packaging Details: wooden box
- Supply Ability: 1000 Unit/Units per Month

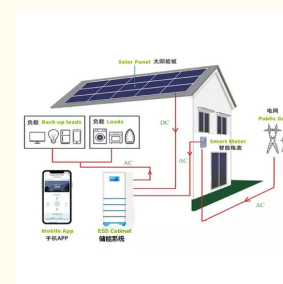
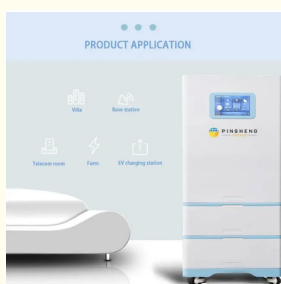


Product Specification

- Features: Long Life
- Battery Type: Lithium Ion, LiFePO4, Other
- Product Name: All In One Solar Cabinet
- Voltage: 48v 96v 156v 208v Customized
- Capacity: 50Ah 100Ah 150Ah 200Ah 300ah
- Battery Size: Customized
- Protection: Built-in BMS
- Application: Solar Energy Storage For Home
- Features 2: Long Warranty
- Features 3: Come With Inverter
- Port: Shenzhen Shanghai Ningbo
- Highlight: **30kw Solar Energy Storage System,
300ah Solar Energy Storage System**



More Images



Product Description

Our Product Introduction

for more products please visit us on rechargeable-lionbattery.com

Specification

| Model | | PE-AIO-1010 | PE-AIO-1015 | PE-AIO-1020 | PE-AIO-1025 |
|------------------------|----------------------------|-----------------------------------|----------------------|--------------------|----------------------|
| Battery Voltage | | 204.8V | 153.6V | 204.8V | 256V |
| Output Parameters (AC) | Rated Power | 10kW | | | |
| | Curren Ratedt | 43.5A | | | |
| | Voltage/range | 230V/176Vac~270Vac | | | |
| | Frequency Ranges | 50/60Hz | | | |
| | Efficiency | 0.99lagging~0.99leading(settable) | | | |
| | THDI | <2% | | | |
| | Battery voltage range | 85v~400V | | | |
| | Battery pack rated voltage | 204.8V | 153.6V | 204.8V | 256V |
| Battery | Capacity Of Battery | 5.12kWh*2 | 5.12kWh*3 | 5.12kWh*4 | 5.12kWh*5 |
| DC input | Charge/discharge current | 50A/50A | 80A/80A | | |
| | Battery type | LiFePO4(LFP) | | | |
| | Max. Input Power | 13kW | | | |
| | Max. PV voltage | 550V | | | |
| | MPPT range/nominal | 125V~500V/360V | | | |
| | Max. input current | 12A | | | |
| | MPPT tracker/strings | 2/2 | | | |
| | Rated power w/va | 10kW | | | |
| | Max. Output Power | 12.5kW 60S/15kW 1S | | | |
| | | Rated voltage | 230V | | |
| Eps output | Rated current | 43.5A | | | |
| | Rated frequency | 50/60Hz | | | |
| | Automatic switchover time | <20ms | | | |
| | THDU | <2% | | | |
| Appearance | Size(W/D/H) | 640mm*490mm*1262mm | 640mm*490mm*1455.5mm | 640mm*490mm*1649mm | 640mm*490mm*1842.5mm |
| | Weight(approx) | 210kg | 230kg | 291kg | 357kg |
| | DC max. efficiency | 98.2% | | | |
| General data | MPPT efficiency | 99% | | | |
| | Operating temperature | -20°C~55°C | | | |
| | Protection level | IP21 | | | |

Noise emission(typical)

<35dB

Display

LCD

Interface

CAN/RS485/WIFI

Company Profile

Pinsheng Energy with R&D located in Changsha City, Hunan Province, near to Guangzhou. It is a High-Tech Enterprise with 4,000 square meters workshop and 121 staffs. Pinsheng Energyh focus on developing and producing Lithium battery and battery system integration, after many years development and research, we have formed a complete industry chain from research, production to sales. Our lithium battery has the characteristics of longer cycle life, more higher security and more reliability, higher energy density and other superior performance. Our products are widely used in energy storage system such as off grid wind & solar energy storage, telecommunication system, UPS and etc and power system such as electric motorcycles, electric bikes, E- scooter, electric tricycles, golf cart, fork lift,electric vehiclesetc. Pinsheng Energy Battery products has a good reputation in China and abroad, it has strict quality guarantee system to ensure high-quality products. Pinsheng Energy put customers' needs at the first and listen to their suggestions. We will continuously improve our product quality and services.

Pinsheng Energy is edicated to be a top OEM &ODM lithium battery manufacturer in the world.

FAQ

1. who are we?

We are based in Hunan, China, start from 2011, sell to Western Europe(28.00%), North America(27.00%), Southeast Asia(18.60%), South America(5.00%), Eastern Asia(5.00%), South Asia(5.00%), Eastern Europe(3.00%), Africa(3.00%), Mid East(2.00%), Oceania(1.50%), Central America(1.00%), Northern Europe(0.50%), Southern Europe(0.30%), Domestic Market(0.10%). There are total about 101-200 people in our office.

2. how can we guarantee quality?

Always a pre-production sample before mass production;

Always final inspection before shipment;

3. what can you buy from us?

battery, lithium battery, solar energy system, lithium power battery, lithium battery pack

4. why should you buy from us not from other suppliers?

more than 4,500 square meters workshop and 150 staffs. more than 11 years OEM & ODM experiences and be a strong supplier of many well-known customers. Manufacturer competitive price Good after-sales service Integrity management On-time delivery

5. what services can we provide?

Accepted Delivery Terms: FOB, CFR, CIF, EXW, CIP, FCA, CPT, DEQ, DDP, DDU, Express Delivery, DAF, DES

Accepted Payment Currency: USD, EUR, JPY, CAD, AUD, HKD, GBP, CNY, CHF;

Accepted Payment Type: T/T, L/C, D/P, D/A, MoneyGram, Credit Card, PayPal, Western Union, Cash, Escrow;

Language Spoken: English, Chinese, Spanish, Japanese, Portuguese, German, Arabic, French, Russian, Korean, Hindi, Italian



Hunan Pinsheng Energy Technology Co., LTD.



15616151876



info@pinshengenergy.com



rechargeable-liionbattery.com

NO. 259, Lixiang East Road, Xiangfeng Technology Industry Park, Changsha City, Hunan, China.