



18650 Grade A Electric Bike Battery 48V 20Ah For 250W 350W 500W 750W Electric Bicycle

Our Product Introduction

for more products please visit us on rechargeable-liionbattery.com

Basic Information

- Place of Origin: HUNAN,CHINA
- Brand Name: pinsheng
- Certification: CE
- Model Number: PE3610
- Minimum Order Quantity: 1 Set
- Delivery Time: 25
- Payment Terms: T/T
- Supply Ability: 30000+set+per month

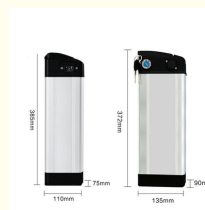


Product Specification

- Anode Material: NCM
- Chargeable: Yes
- Application: Home Appliances, Consumer Electronics, BOATS, Golf Carts, SUBMARINES, Ele
- Battery Size: 36v 10ah
- The Charging Ratio: 0.5C
- The Discharge Rate: 1C
- Certificate: CE/MSDS/UN38.3
- Capacity: 10ah-100ah
- Highlight: Electric Bike Battery 48V 20Ah, 18650 Electric Bicycle Battery 750W



More Images



Product Description

Factory Direct Price 18650 Grade A Cell Electric Bike Battery 48V 20Ah For 250W 350W 500W 750W Electric Bicycle

Our Product Introduction

Company Display



PINSHENG
ENERGY

Hunan Pinsheng Energy Technology Co.,LTD



CERTIFICATE



LITHIUM BATTERY SUPER HIGH QUALITY AND RELIABLE



CUSTOMIZE
LOGO,CAPACITY,VOLTAGE&SIZE



PINSHENG
ENERGY

PROFESSIONAL OEM/ODM MANUFACTURER

Key Features of Pinsheng Energy Battery :

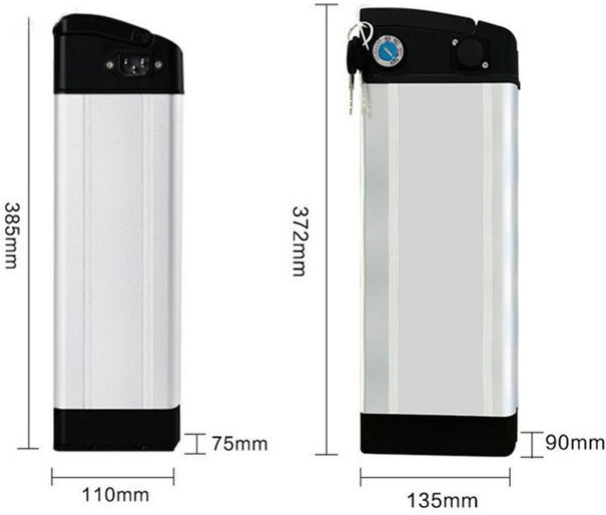
- 1.Factory Price
2. After sales and quality assurance
3. Most safe LFP battery technology, no cobalt .
4. Long lifetimes ->5000 cycles
5. Easily expandable
6. Easily replacement the original lead acid battery .
7. Self-engineered BMS
8. Short circuit/ Over current/ Over voltage/ Over temperature protection .
9. Bluetooth APP available on request to see the status of the battery .
10. IP65 waterproof .
11. OEM logo available

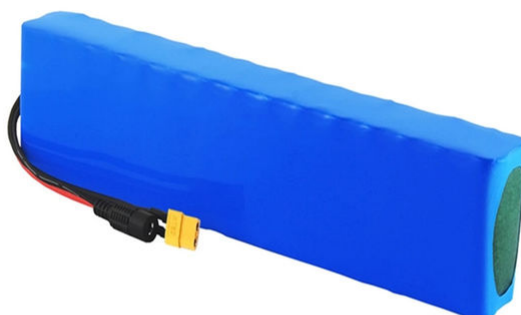
Specifications :

48v 10Ah battery parameters		
Battery Type	lifepo4 cell	Note
Nominal Capacity	10Ah at 23±2	Standard charge and discharge
Nominal Voltage	36V	

288Energy	480Wh at 23±2	
Weight	6KG	
Size	76*110*385mm	it can adjustable
Nominal Capacity	10Ah	
Charging Voltage	54.75±0.15V	
Discharge End Voltage	37.5±0.3V	
Standard Charging Method	CC and CCV is 5A	Temperature23±2 ,charge end with 2.5h or current drops to 0.02C
Max.Charge Current	10A	Temperature23±2
Standard Discharging Method	10A	Constant Current Discharge with 1C
Max.Discharge Current	20A	Discharge Time: Less than 60 s(at23±2)
Cycle life	~1000cycles	1C/1C, Retention ≥70% of initial capacity

Operating Temperature	0 ~45	Charging Operating
	-20 ~45	Discharging Operating







WE CAN DO IT



Our advantage :

- ✓ high efficiency development based on our strong team
- ✓ supply goods with lowest price
- ✓ high quality service



Our promise :

- ✓ professional service for customer , provide correct sample quickly
- ✓ supply high quality standard
- ✓ delivery goods on time

PAYMENT&LOGISTICS

LOGISTICS

BY AIR / BY SEA / EXPRESS / UPS / FEDEX / DHL



Trade Assurance

T/T



L/C

PayPal



VISA

FAQ

Q1 Can you give me a discount ?

A: We are manufactory , our policy is that bigger quantity , cheaper price , so we will give you discount according to your order quantity

Q2 The shipping cost is too high , can you give me more cheaper ?

A: When we calculate the shipping cost for you . we will use the cheapest and safest courier .and it is shipping company who ask us to pay , we cant gie you cheaper , pls kindly understand But we can promise that we will not ask you to pay more shipping cost , if u think it is too expensive , you can use your own shipping company . it is ok for us .

Q3 Can you offer free shipping ?

A: For we are manufacturer, we have given the cheapest price as we can,and we did not add shipping cost into the products cost , so we cant offer free shipping , pls kindly understand , tks .

Contact Us



Sofia Tse
Sales Manager

**Hunan Pinsheng Energy
Technology Co.,LTD**




2/F, Building 4, Xiangfeng High-Tech Industrial Park, Changsha
County, Changsha City, Hunan Province
M.P.: +86-15675831763/13307465388
P.C: 410100
E-Mail: sofia_tse210816@gmail.com



Hunan Pinsheng Energy Technology Co.,LTD



Hunan Pinsheng Energy Technology Co., LTD.

 15616151876  info@pinshengenergy.com  rechargeable-liionbattery.com

NO. 259, Lixiang East Road, Xiangfeng Technology Industry Park, Changsha City, Hunan, China.