



## 6000mah 3.7v Power Lithium Ion Battery Cells Pack For E Bike Scooter Motorcycles

### Our Product Introduction

for more products please visit us on [rechargeable-liionbattery.com](http://rechargeable-liionbattery.com)

#### Basic Information

- Place of Origin: HUNAN, CHINA
- Brand Name: pinsheng
- Certification: CE
- Model Number: PE3610
- Minimum Order Quantity: 1 Set
- Delivery Time: 25
- Payment Terms: T/T
- Supply Ability: 30000+set+per month



#### Product Specification

- Anode Material: NCM
- Chargeable: Yes
- Application: Home Appliances, Consumer Electronics, BOATS, Golf Carts, SUBMARINES, Ele
- Battery Size: 36v 10ah
- The Charging Ratio: 0.5C
- The Discharge Rate: 1C
- Certificate: CE/MSDS/UN38.3
- Capacity: 10ah-100ah
- Highlight: 6000mah Lithium Ion Battery Cells, 3.7v Lithium Ion Battery Cells



## *Product Description*

### **6000mah 3.7v Power Lithium Ion Battery Cells Pack For E Bike Scooter Motorcycles**

Our Product Introduction

for more products please visit us on [rechargeable-liionbattery.com](http://rechargeable-liionbattery.com)

# Company Display



PINSHENG  
ENERGY

Hunan Pinsheng Energy Technology Co.,LTD



## CERTIFICATE



# LITHIUM BATTERY SUPER HIGH QUALITY AND RELIABLE



CUSTOMIZE  
LOGO,CAPACITY,VOLTAGE&SIZE



PINSHENG  
ENERGY

PROFESSIONAL OEM/ODM MANUFACTURER

## Key Features of Pinsheng Energy Battery :

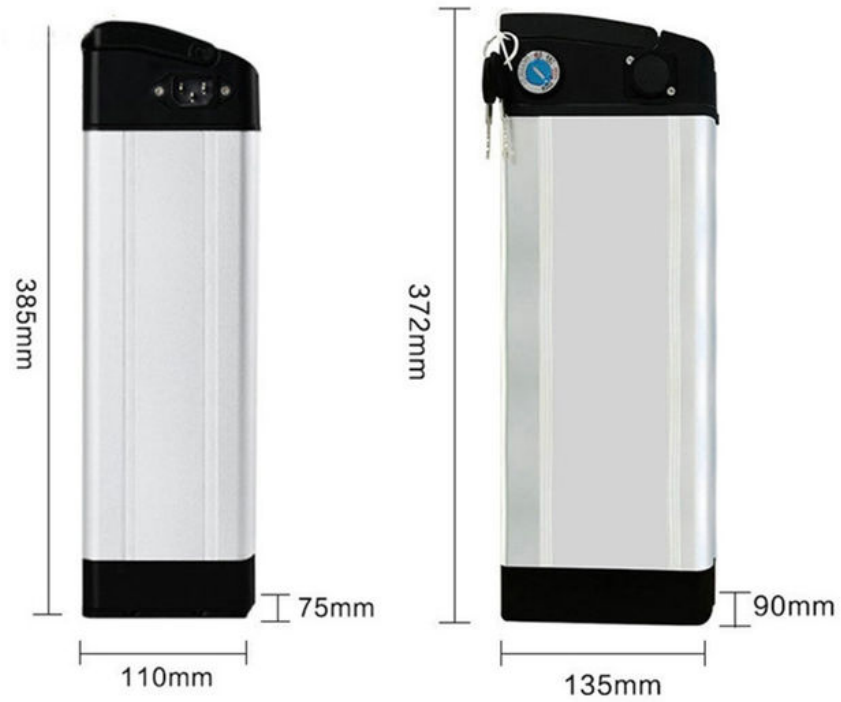
- 1.Factory Price
2. After sales and quality assurance
3. Most safe LFP battery technology, no cobalt .
4. Long lifetimes ->5000 cycles
5. Easily expandable
6. Easily replacement the original lead acid battery .
7. Self-engineered BMS
8. Short circuit/ Over current/ Over voltage/ Over temperature protection .
9. Bluetooth APP available on request to see the status of the battery .
10. IP65 waterproof .
11. OEM logo available

## Specifications :

48v 10Ah battery parameters

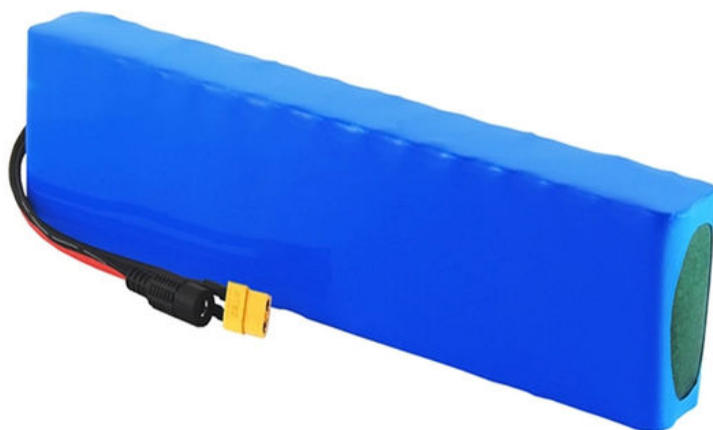
Battery Type	lifepo4 cell	Note
Nominal Capacity	10Ah at 23±2	Standard charge and discharge
Nominal Voltage	36V	
288Energy	480Wh at 23±2	
Weight	6KG	
Size	76*110*385mm	it can adjustable
Nominal Capacity	10Ah	
Charging Voltage	54.75±0.15V	

Discharge End Voltage	37.5±0.3V	
Standard Charging Method	CC and CCV is 5A	Temperature 23±2 ,charge end with 2.5h or current drops to 0.02C
Max.Charge Current	10A	Temperature 23±2
Standard Discharging Method	10A	Constant Current Discharge with 1C
Max.Discharge Current	20A	Discharge Time: Less than 60 s(at 23±2 )
Cycle life	~1000cycles	1C/1C, Retention ≥70% of initial capacity
Operating Temperature	0 ~45	Charging Operating
	-20 ~45	Discharging Operating











## WE CAN DO IT



### Our advantage :

- ✓ high efficiency development based on our strong team
- ✓ supply goods with lowest price
- ✓ high quality service



### Our promise :

- ✓ professional service for customer , provide correct sample quickly
- ✓ supply high quality standard
- ✓ delivery goods on time

# PAYMENT&LOGISTICS

## LOGISTICS

BY AIR / BY SEA / EXPRESS / UPS / FEDEX / DHL



## Trade Assurance

T/T



L/C

PayPal



VISA

# FAQ

## Q1 Can you give me a discount ?

**A:** We are manufactory , our policy is that bigger quantity , cheaper price , so we will give you discount according to your order quantity

## Q2 The shipping cost is too high , can you give me more cheaper ?

**A:** When we calculate the shipping cost for you . we will use the cheapest and safest courier .and it is shipping company who ask us to pay , we cant gie you cheaper , pls kindly understand But we can promise that we will not ask you to pay more shipping cost , if u think it is too expensive , you can use your own shipping company . it is ok for us .

## Q3 Can you offer free shipping ?

**A:** For we are manufacturer, we have given the cheapest price as we can,and we did not add shipping cost into the products cost , so we cant offer free shipping , pls kindly understand , tks .

# Contact Us



PINSHENG  
ENERGY



**Sofia Tse**

Sales Manager

**Hunan Pinsheng Energy  
Technology Co.,LTD**

2/F,Building 4,Xiangfeng High-Tech Industrial Park,Changsha

County, Changsha City, Hunan Province

M.P.:+86-15675831763/13307465388

P.C: 410100

E-Mail: sofia\_tse210816@gmail.com



PINSHENG  
ENERGY

Hunan Pinsheng Energy Technology Co.,LTD



**Hunan Pinsheng Energy Technology Co., LTD.**

☎ 15616151876

✉ info@pinshengenergy.com

🌐 rechargeable-liionbattery.com

NO. 259, Lixiang East Road, Xiangfeng Technology Industry Park, Changsha City, Hunan, China.

