



Black 500AH Lithium Ion Auto Battery 12 Volt Lithium Ion Batteries For Cars

Our Product Introduction

for more products please visit us on rechargeable-liionbattery.com

Basic Information

- Place of Origin: China
- Brand Name: Pinsheng Energy
- Certification: CE , MSDS , UN38.8 , ISO9001
- Model Number: PE7230-1
- Minimum Order Quantity: 1
- Price: USD435-486/pc
- Packaging Details: carton box, UN box, wooden box
- Delivery Time: 10-20days
- Payment Terms: L/C , D/A , D/P , T/T , Western Union , MoneyGram
- Supply Ability: 10000pcs/month



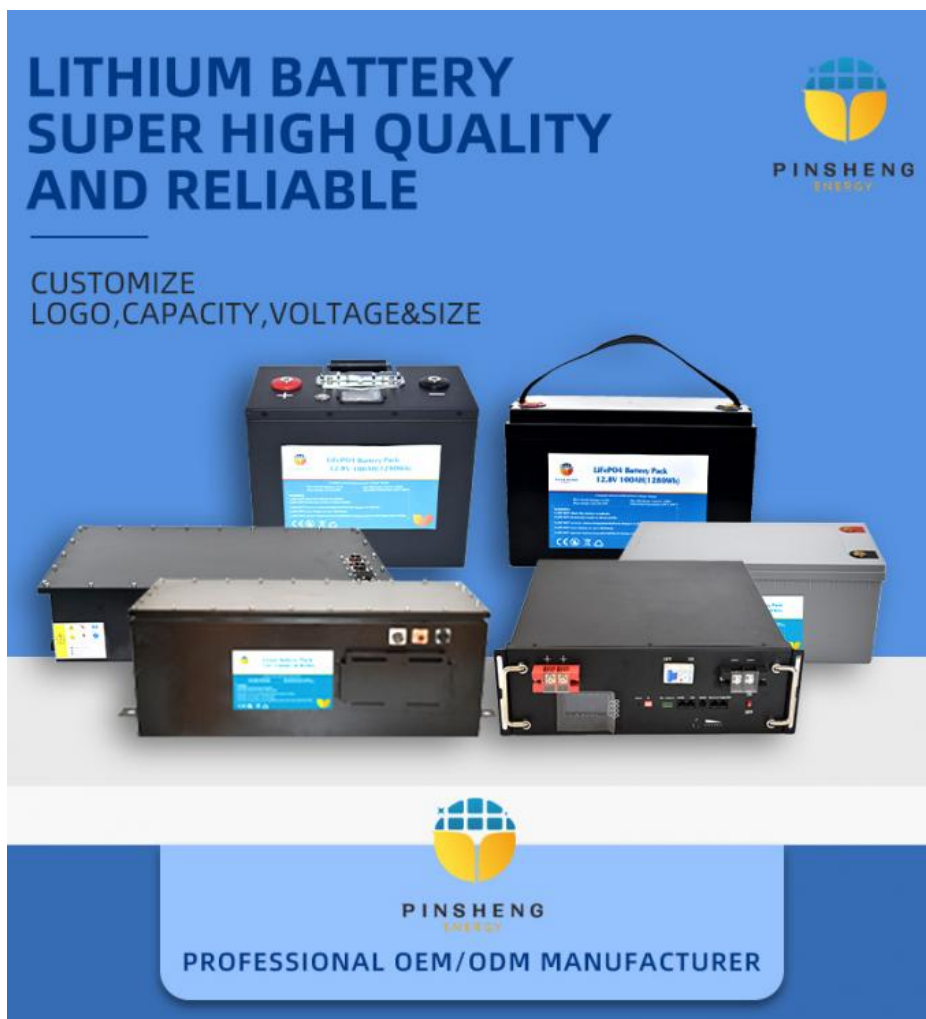
Product Specification

- Product Name: 72V 30Ah Ebike Battery Pack
- Material: Steel
- Size: 220 L * 170 W * 300 H Mm
- Weight: 21.9kgs
- Voltage: 72V
- Capacity: 30Ah
- Charging Cut Off Voltage: 60V
- Discharging: 84V
- Highlight: 500AH Lithium Ion Batteries For Cars , Lithium Ion Auto Battery 3500 Times, ODM Lithium Ion Auto Battery



More Images





E-Scooter Battery 48V 72V 30Ah 40Ah 50Ah LiFePO4 NCM Electric Bike Lithium ion Battery Pack

Model: PE7230-1

Parameters:

1. Product Name: 72V 30Ah Ebike Battery
2. Dimension: 220 (L) * 170 (W) * 300 (T) mm
3. Weight: 21.9Kgs
4. Material: Steel
5. Color: Black/Customized
6. Working Voltage: 72V
7. Capacity: 30Ah
8. Charging Cut Off Voltage: 60V
9. Discharging Limit Voltage: 84V
10. Battery Cell: NCM or LFP
11. Working Temperature: -20°C ~ 60°C
12. Charging Temperature: 0°C ~ 55°C

Application

Widely use for E-bike , Electric Bicycle , E-scooter , Electric Scooter , Electric Motorbicycle , EV , RV , AGV .

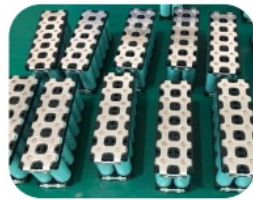
Advantage

1. Green - Environmental friendly
2. Safe - We Just do A Grade Quality
3. High Performance - High density of energy
4. Longer cycle life - 3,500 Cycle Life
5. Low internal resistance - 1mΩ
6. Zero memory effect

Item	Detail
Product Name	72V E-scooter Battery
Series - Parallel Mode	14S4P
Cycle Life	3500 Times 100% DOD
Dimension	220 (L) * 170 (W) * 300(H) mm
Weight	21.9Kgs

Item	Detail
Battery Box Material	Steel
Color	Black / Customized
Working Voltage	72V
Capacity	30Ah
Charging Cut Off Voltage	60V
Discharging Limit Voltage	84V
Battery Cell	NCM or LFP (18650 21650 32700) Polymer Battery
Working Temperature	-20°C ~ 60°C
Charging Temperature	0 ~ 55
Working Humidity	80 %
Internal Resistance	1mΩ
Self Discharging Rate	3% Per Month
OEM / ODM	Support
Charging / Discharging Interface	Customized

Battery Cell



Item	Detail
Battery Type	NMC
Capacity	Ah, 8Wh @C2, 25°C
Nominal Voltage	3.6V DC
Cycle Life @ 100% DOD	> 2500 Cycles(100% @C2, 25°C)
Cycle Life @ 80% DOD	>3500 Cycles(80% @C2, 25°C)
Cycle Life @ 70% DOD	>4500 Cycles(70% @C2, 25°C)
Dimensions	Dia18mm(L)x30mm(W)x185mm(T)
Weight	41g
Charging Cut-off Voltage	3V
Discharging Limit Voltage	4.2V
Charging Under/Over Temp Protection	0°C/55°C
Charging under/over Temp Protection	-20°C/60°C

Notes

1. Large-scale electric vehicles: electric bus, electric car, E-Tour Car
2. Light electric car: e-bike, e-scooter, e-motorcycle, electric golf cart, e-wheelchair
3. E-tool: electric drill, electric saw, lawn mower and so on
4. Remote control cars, electric boat, aircraft, toys
5. Solar and wind power generation energy storage devices, solar systems, Telecom base Station
6. Small medical equipment and portable equipment
7. RV, Camping car and yacht
8. Solar energy lights, bicycle lights, LED lights, bright flashlight, solar street lights





Trade Assurance



Hunan Pinsheng Energy Technology Co., LTD.

☎ 15616151876

✉ info@pinshengenergy.com

🌐 rechargeable-liionbattery.com

NO. 259, Lixiang East Road, Xiangfeng Technology Industry Park, Changsha City, Hunan, China.