

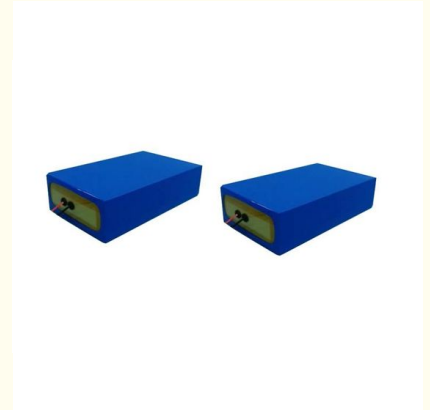


## Portable LifePO4 Lithium Battery 24V 20Ah Rechargeable Lithium Batteries

Our Product Introduction

### Basic Information

- Place of Origin: Changsha, China
- Brand Name: HYZZ
- Certification: ISO9001, CE, CB, UN38.3
- Model Number: HY00085
- Packaging Details: foam, wooden box / foam, carton, tray
- Delivery Time: 22 days
- Payment Terms: L/C, T/T
- Supply Ability: 10,000 PCS per month



### Product Specification

- Name: LifePO4 Lithium Battery
- Model: 24V 20Ah
- L X W X H: 264mmX164mmX64mm
- Application: Measuring Instruments, Meteorological Instruments, Etc.
- Serialization: 8S
- Internal Resistance:  $\leq 100\text{m}\Omega$
- Highlight: **lithium iron phosphate battery, lifepo4 rechargeable battery**

for more products please visit us on [rechargeable-liionbattery.com](http://rechargeable-liionbattery.com)

## Product Description

### Portable LifePO4 Lithium Battery 24V 20Ah Rechargeable Lithium Batteries

Model: 24V20Ah

Dimension: 264mmX164mmx64mm

Features: iron lithium 81160227/8S; charge cut-off voltage:29.2V; discharge cut-off voltage: 20V; working current:10A; weight:5.6KG

#### Why you choose us ?

1. We can provide OEM service ,custom your logo both on the product and the packing you want !
2. High quality products ,all of the products must passed strict QC before shipping ,0.01% defective rate !
3. Fastest response rate ,save your time and easy your business !
4. Safe payment methods ,Safe business ,we support T/T,western union ,paypal,trade assurance
5. We provide after-sale service,all of our goods have 1-3 year warranty

#### Applications :

- ◆ Wheelchairs and scooters
- ◆ Solar/wind energy storage
- ◆ Back-up power for small UPS
- ◆ Golf trolleys & buggies
- ◆ Electric bikes

		Number	HY00085
		Version	A0
	<b>HYLF/24/20-001</b>	Date	2019-5-7
	Battery pack specification		
<b>1 Basic characteristics</b>		Product picture	
Product name	Industrial lithium battery	Batteries:Lithium iron phosphate battery	
product code	HYLF/24/20-001		
L x W x H	264mmX164mmx64mm		
Rated voltage	24VSeries structure		
Rated Capacity	20Ah		
Serialization	8S		
Internal resistance	≤100mΩ		
Discharge cutoff voltage	18.4V	Shell color	
Charging protection voltage	28.8V	<input type="checkbox"/> Sub black	
Max.charging voltage	29.2V	<input type="checkbox"/> Bright gray	
Max. charging current	10A	<input type="checkbox"/> +Fruit green + bright gray two-color	
Maximum discharge current	10A	<input type="checkbox"/> White+ black	
Peak current	20±2 2S	<input checked="" type="checkbox"/> Blue thermoplastic film	
Rated discharge current	5A	Charging and discharging interface	
		<input type="checkbox"/> Wall terminal	
		<input type="checkbox"/> Anderson	
		<input type="checkbox"/> Navigation plug	
		<input checked="" type="checkbox"/> Positive and negative lines	
		<input type="checkbox"/> Pole	
		<input type="checkbox"/> Hardware contact	
Charging method	CC/CV		
weight	5.6Kg		
Operating temperature	Charging	0 45	
	Discharge	-20 55	
60-80%SOC , 2 Storage temperature 60-80% SOC storage, need to recharge every 2 months	-10 35		
C1 Cycle life Cycle life	1500 Times		

price	RMB:¥ 00.00
Delivery period	25 Working day

**FAQ**

Q1: How is your battery quality?

Re: our battery have quality guarantee.

Q2: How is battery 's capacity of your company?

Re: All of our batteries are real full capacity .

Q3: How about your company?

Re: 12 years experience to product li-ion battery, focus on battery's quality and research.

Q4: Do you accept OEM/ODM?

Re: We support the OEM/ODM service: Pls don't hesitate to tell us your ideas.

Q5: Which certificates do you have?

Re: We have CE/ROHS.

**Applications:**



**Hunan Pinsheng Energy Technology Co., LTD.**

☎ 15616151876

✉ info@pinshengenergy.com

🌐 rechargeable-liionbattery.com

NO. 259, Lixiang East Road, Xiangfeng Technology Industry Park, Changsha City, Hunan, China.